

EVOLUTION OF THE GEOLOGICAL CARTOGRAPHY IN ECUADOR

Andrea Albán

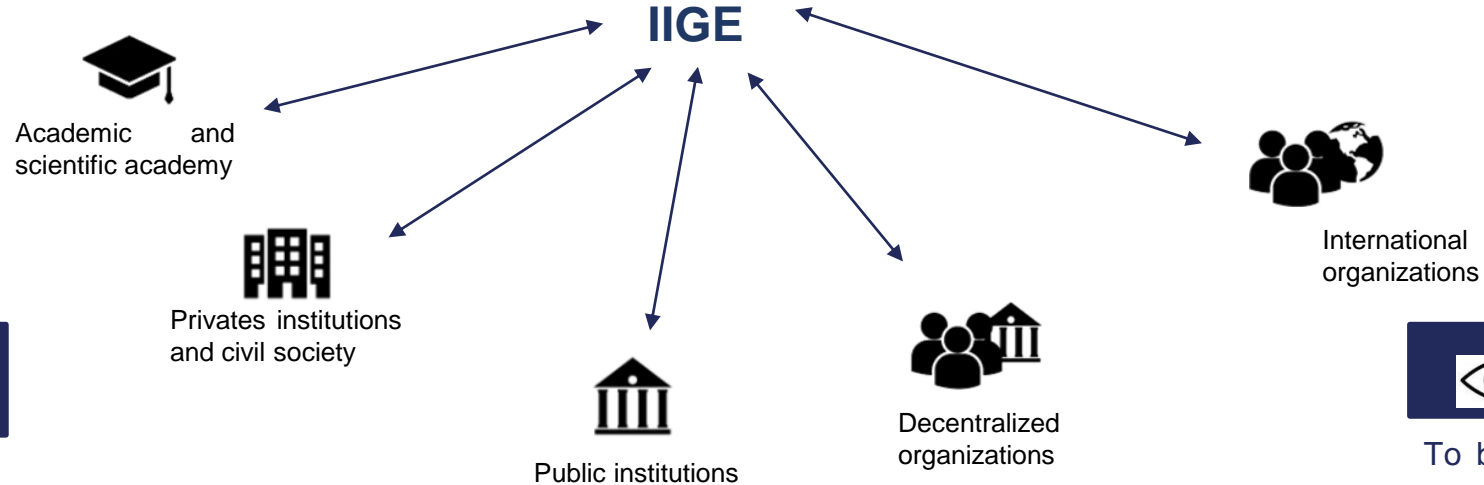
November 2023

Institutional objectives



INSTITUTO DE INVESTIGACIÓN GEOLÓGICO Y ENERGÉTICO

MINISTERIO DE
ENERGÍA Y MINAS
- ECUADOR



MISSION

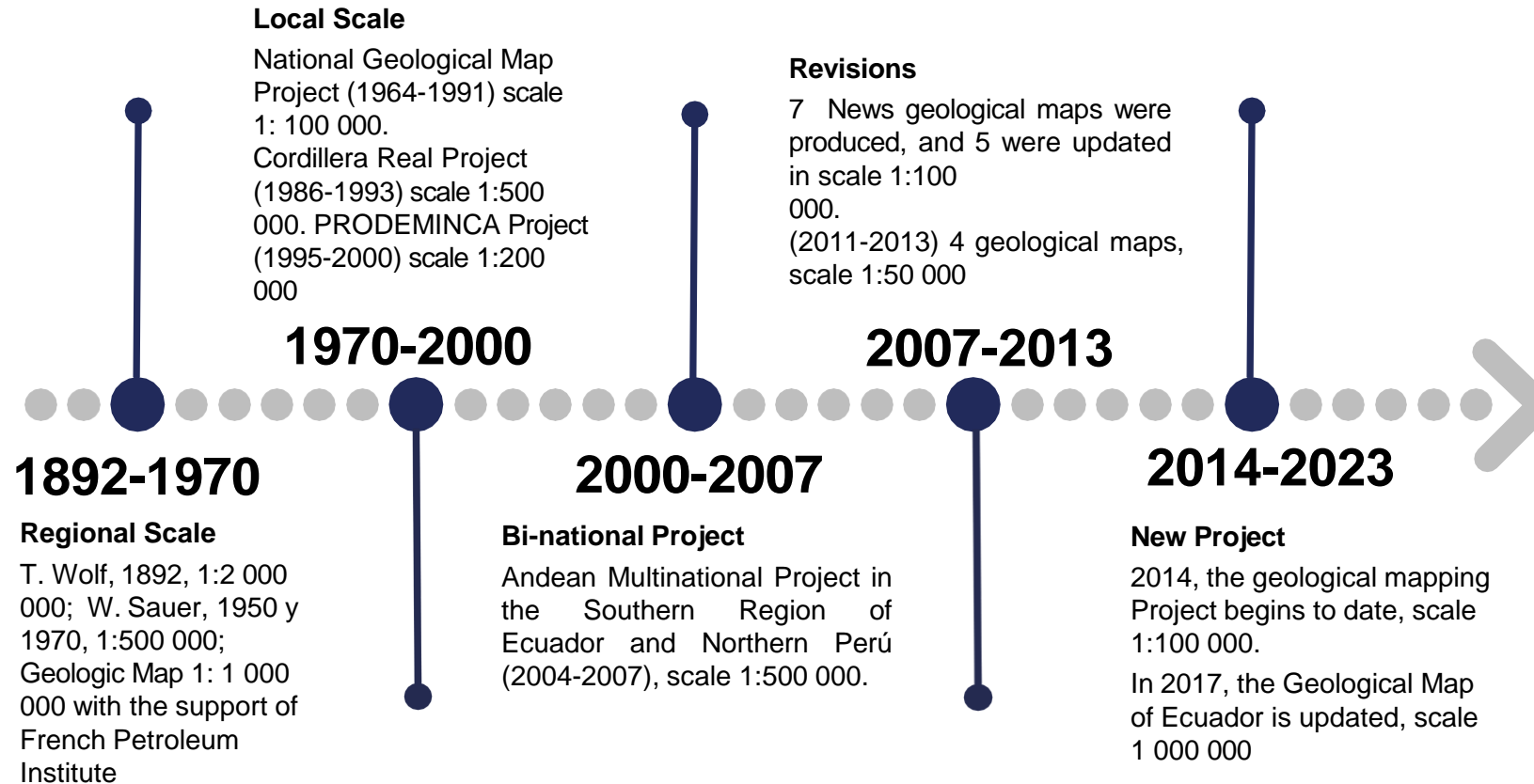
To generate and promote knowledge in the field of geology and energy, through scientific research, technical assistance and specialized services for the responsible use of renewable and non-renewable resources, contributing to decision-making for the benefit of society.



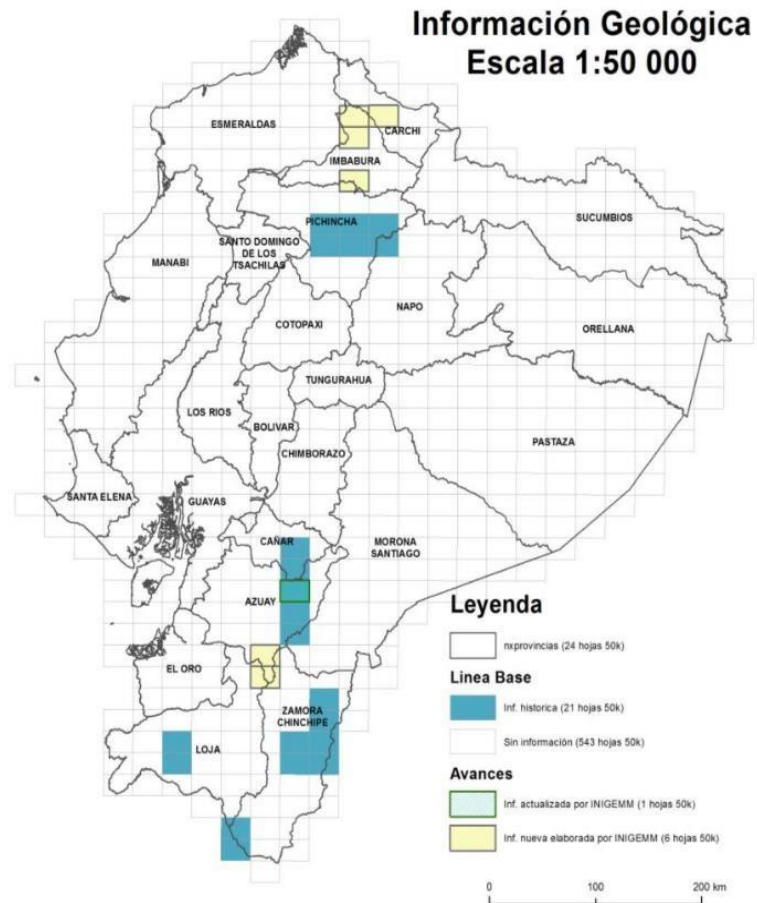
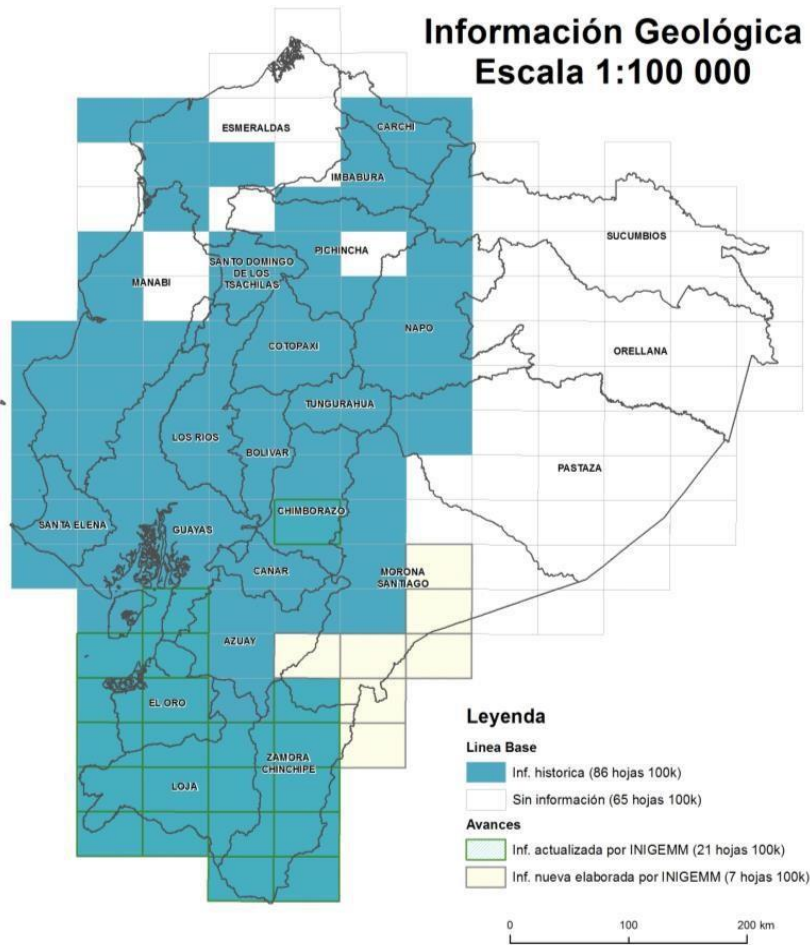
VISION

To be the geological and energy research institute of reference at regional level, contributing to innovation and technological development for the responsible use of renewable and non-renewable resources, with social and environmental responsibility and the development of its human talent committed to the progress of the country.

Historical Knowledge



Historic Information



There are a total of 86 historical geological maps at a scale of 1:100 000 and 21 geological maps at a scale of 1:50 000.

The background image shows two geologists in white uniforms and hats reviewing a map on a mountain ridge. The landscape is hazy with mountains in the distance and a forested valley in the foreground. The sky is blue with scattered white clouds. A dark blue vertical bar is on the left, and a light blue vertical bar is on the right.

ACTUAL GEOLOGICAL MAPPING PROJECT


Gobierno
del **Ecuador**

GUILLERMO LASSO
PRESIDENTE

Project “Geological Investigation and Availability of Mineral Resources Occurrences in the Ecuadorian Territory”

General objective

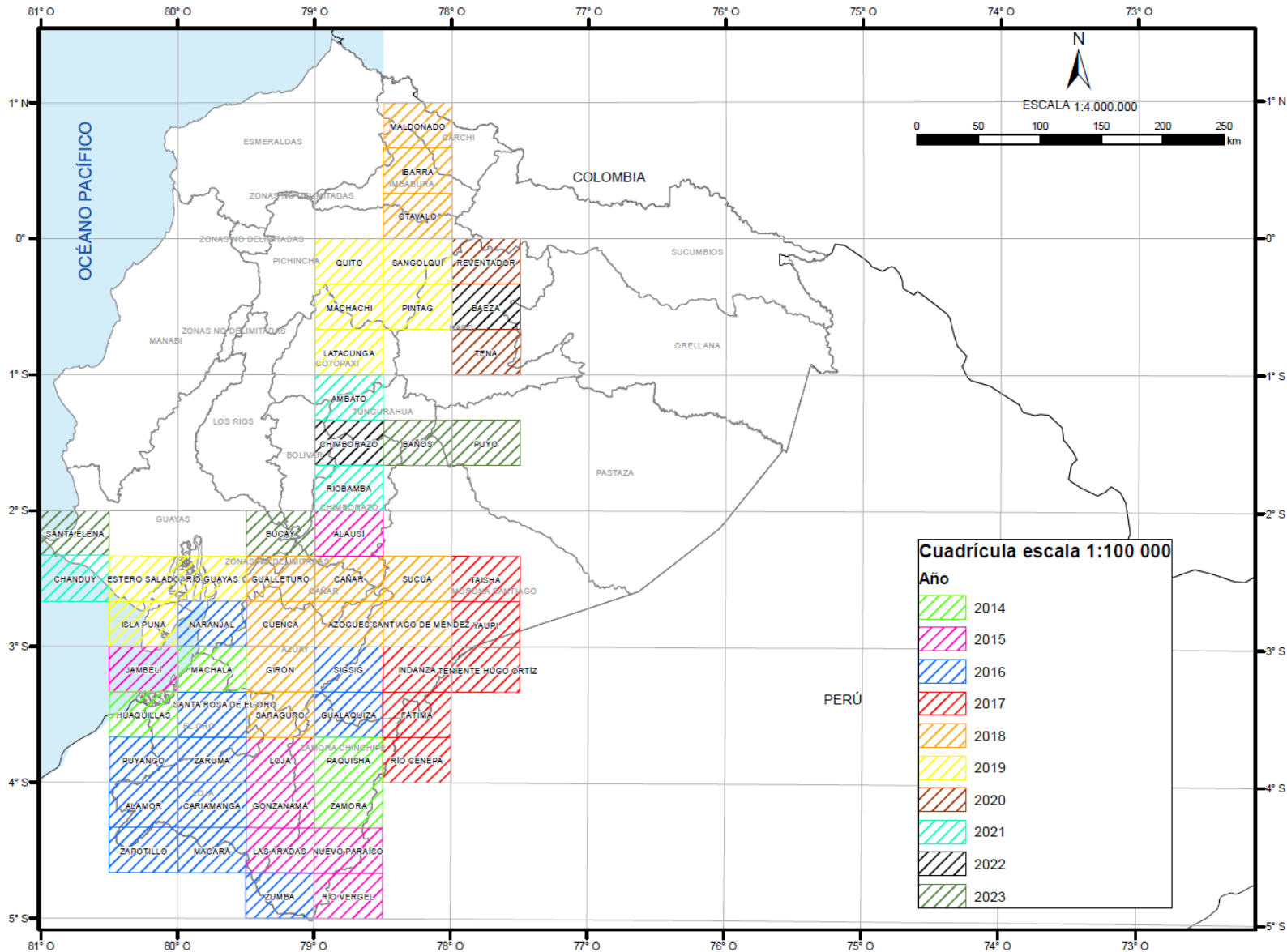
Update and complete the geological, geophysical and geochemical mapping of the Ecuadorian continental territory, aimed at the lithological, mineralogical and structural characterization of the rock substratum for the identification of mineral occurrences

Components

1. Elaborate the geological map at a scale of 1:100,000 of the Ecuadorian continental territory, updated and completed, as well as the geological map at a scale of 1:50,000 in the areas of mining interest.
2. Elaborate the map of mineral occurrences and areas of geological mining interest in the Western, Royal and Sub-Andean Cordilleras, by processing existing and new information on geology, geochemistry and geophysics.
3. Provide and implement the physical and technological infrastructure for the storage, processing and dissemination of existing geo-scientific information generated in the project.



Components of geological mapping project



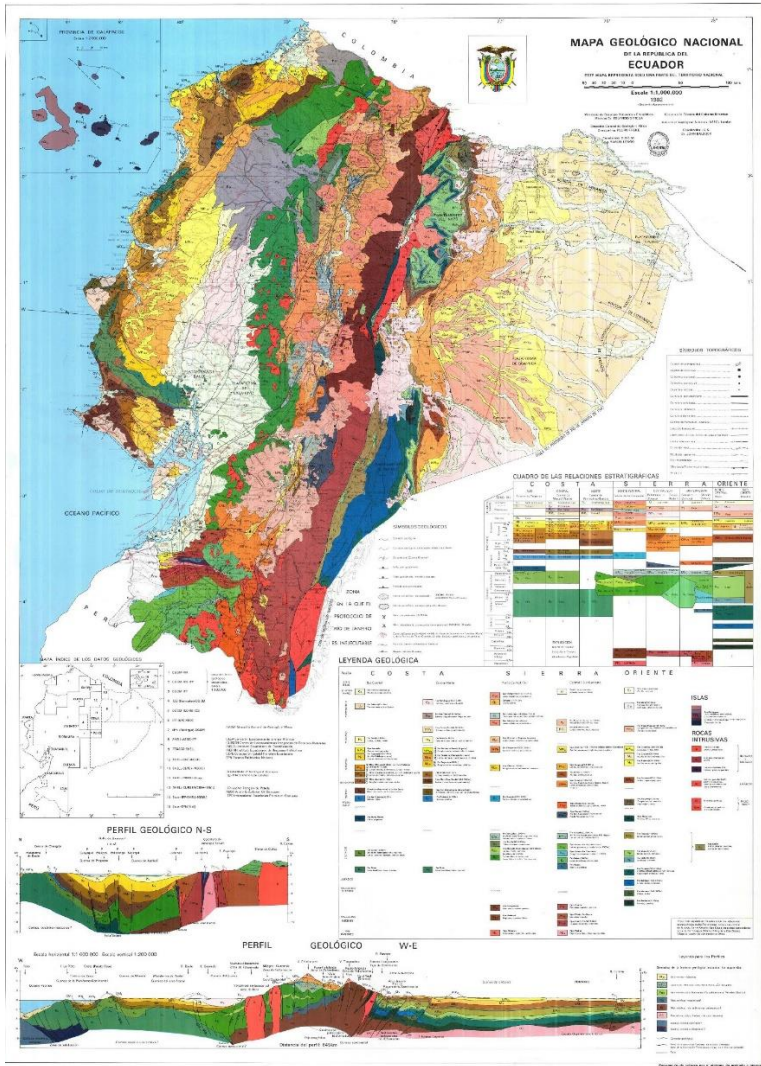
Present Status

To date, 47 geological maps at a scale of 1:100 000 (approximately 40 % of the continental territory).

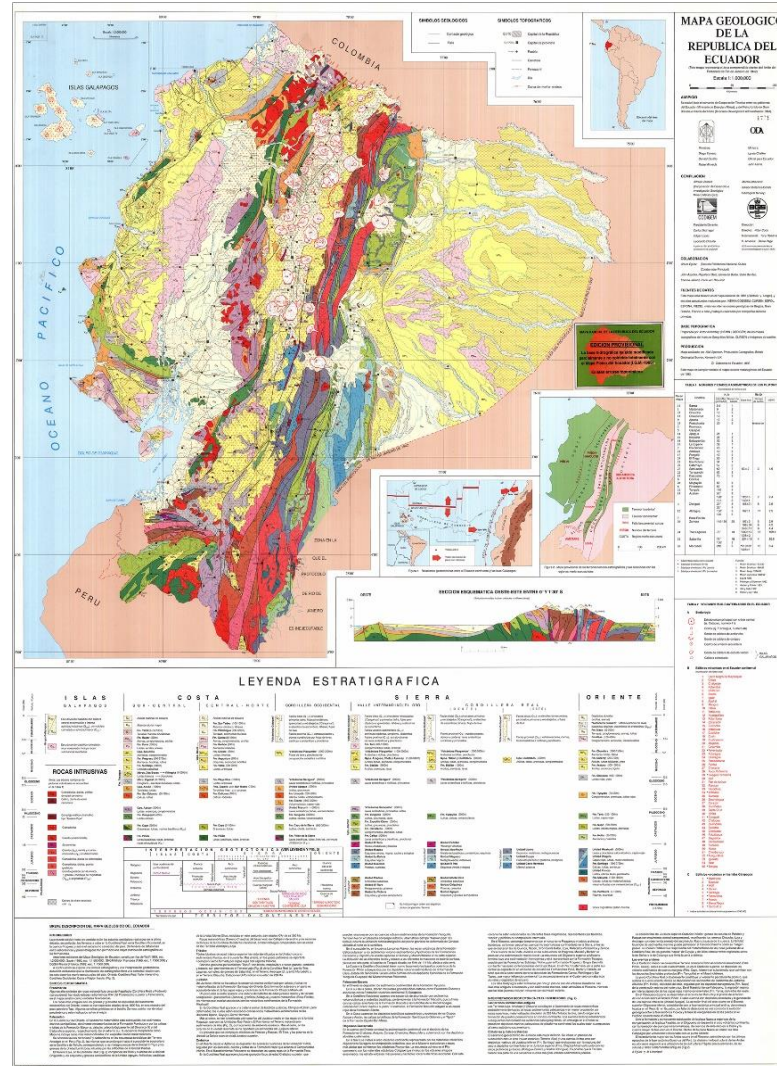
7 geological geological maps at scale 1:50 000(6.4% of the continental territory).

Evolution of Geological Map of Ecuador

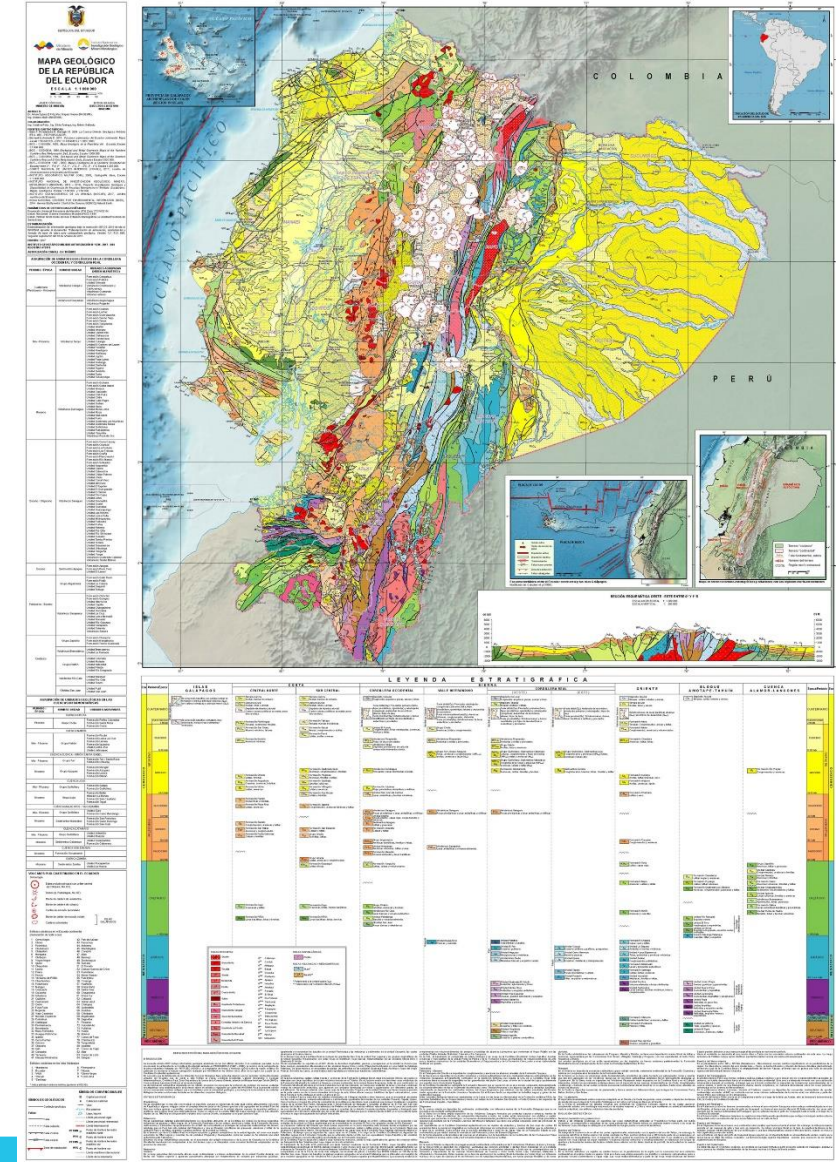
1982



1993



2017



Instituto de Investigación
Geológico y Energético

THANK YOU

