



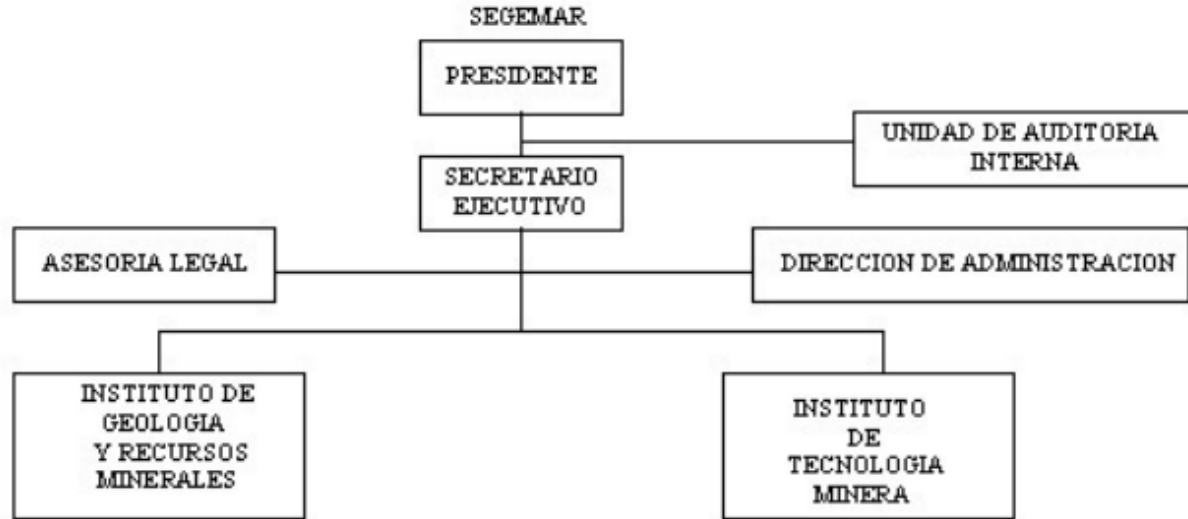
REGIONAL GEOLOGY AND GEOLOGICAL MAPPING

Dra. Alicia Folguera – Dra. Mariela Etcheverría

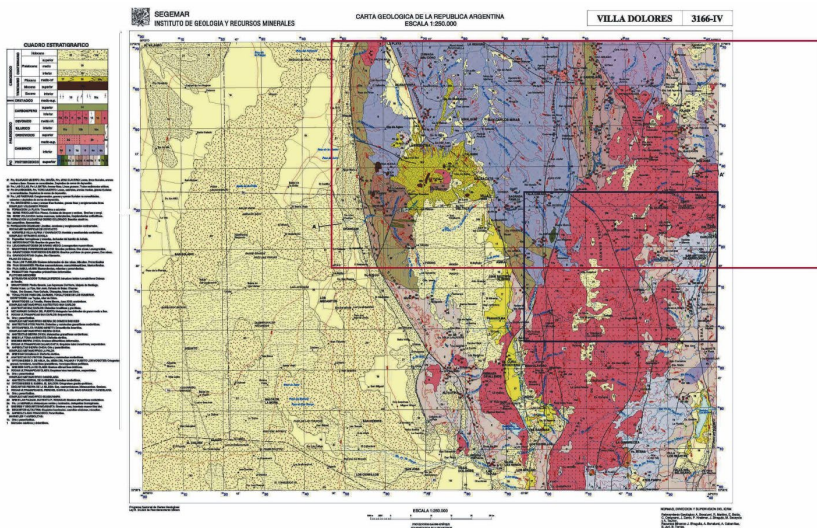
República Argentina
2023



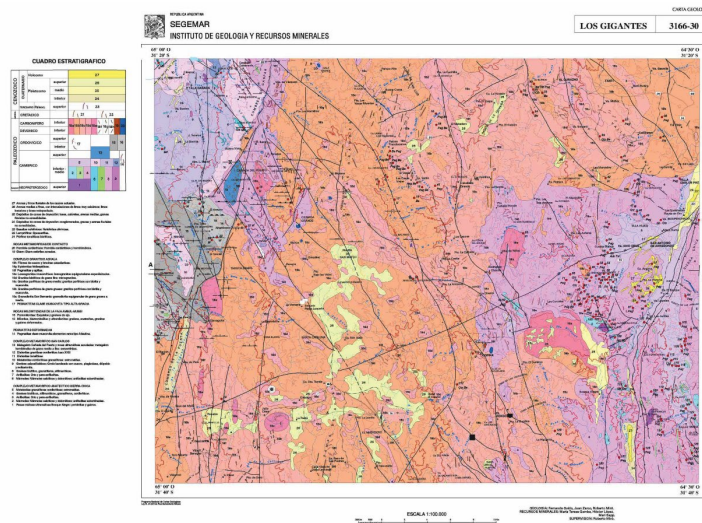
SEGEMAR Structure



National Program of Geological Charts of the Argentine Republic (1993-present)



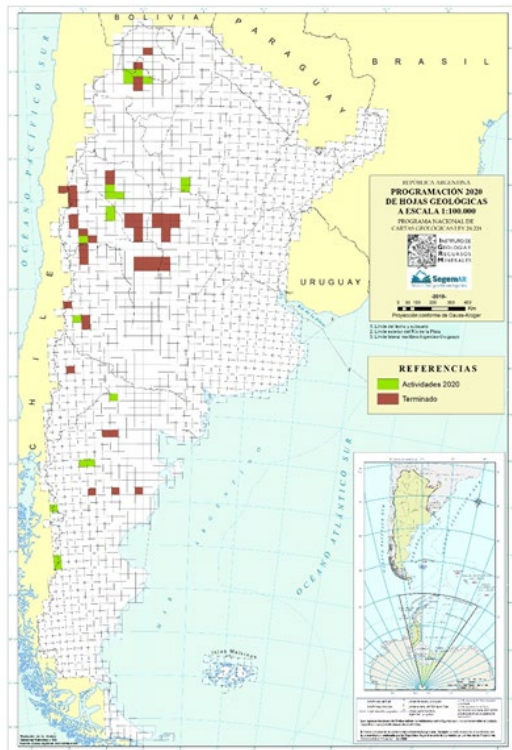
Geological charts 3166-IV Villa Dolores 1:250.000 (Bonalumi et al. 2002)



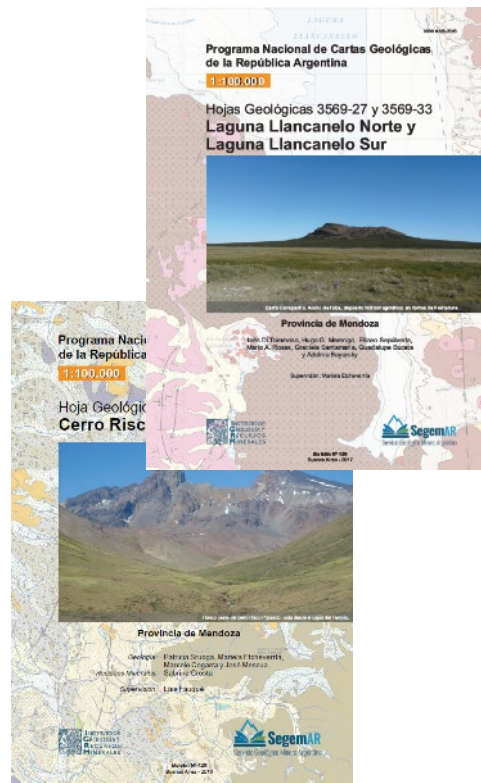
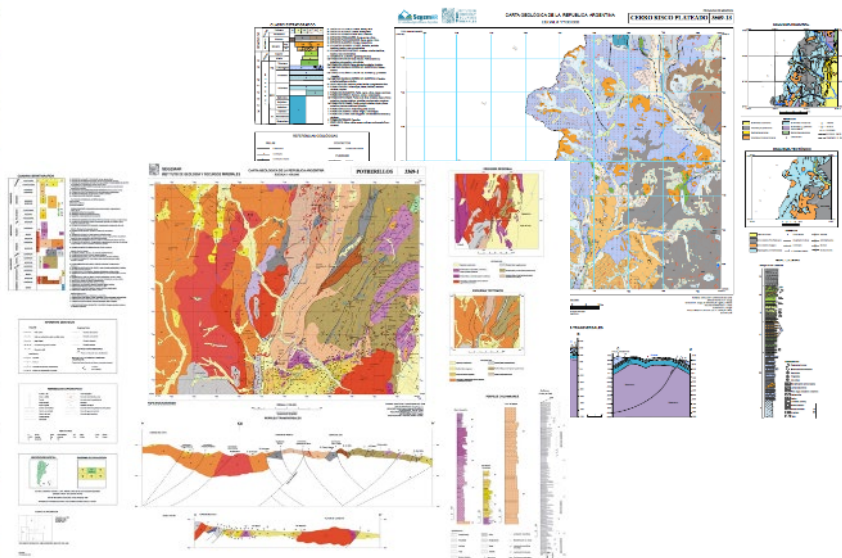
Geological charts 3166-30 Los Gigantes 1:100.000 (Gaido et al. 2003)

In 1993, with the enactment of Law 24224 on mining reorganization, the National Geological Chart Program of the Argentine Republic was strengthened. The systematic mapping at 1:250,000 scale was implemented with the objective to update, standardize and complete the existing information; while the 1:100,000 Program was focused on mapping of sectors with mining interest.

Geological Charts at 1:100,000 scale



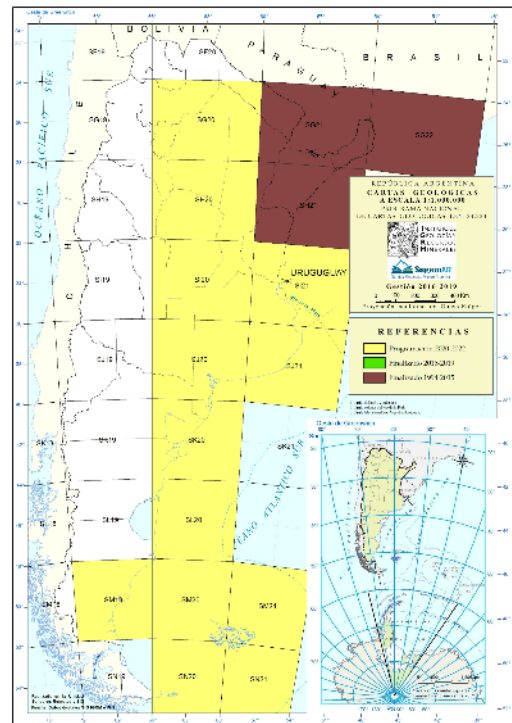
Production line	Completed 1994- 2015	in progress 2019-2023
Geological charts 1: 100.000	90,000 km ²	12.883 km ²



Geological Charts at scale 1: 1.000.000



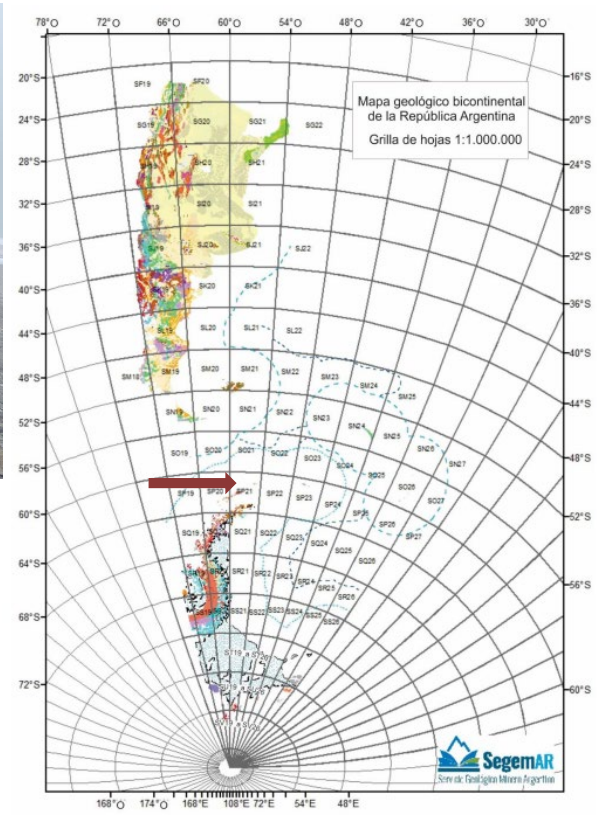
Production line	Completed 1994- 2019	In progress 2019-2023	In Schedule 2024-30
Geological charts 1: 1.000.000	240.877 km ² (9%)	1.251.209 km ² (44.7 %)	1.307.914 km ² (46.3 %)



ASGMI Initiative (2001) AND GTS 15 MERCOSUR

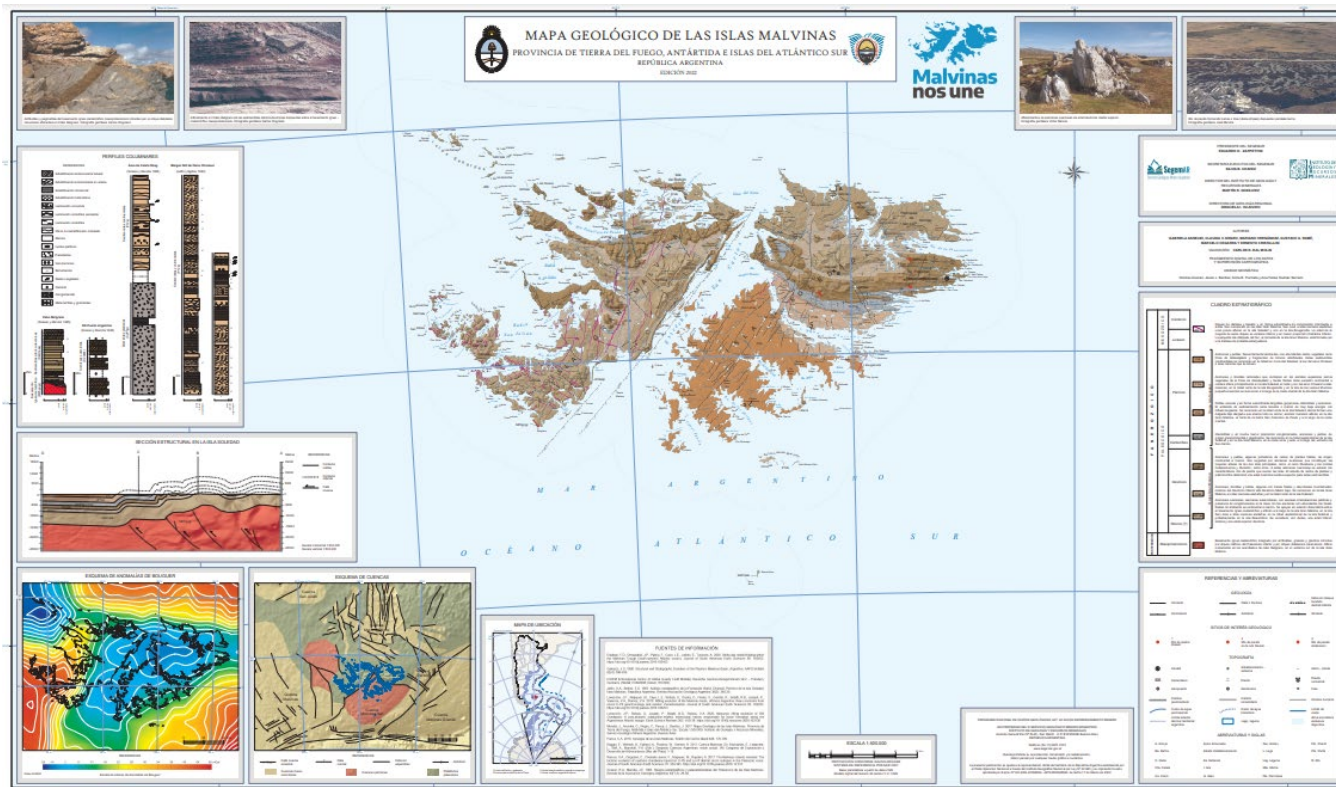
Set of 92 sheets (6° longitude x 4° latitude), in the format of the International Chart of the World to the millionth

Geological charts 1.000.000 SP21. Antarctic peninsula

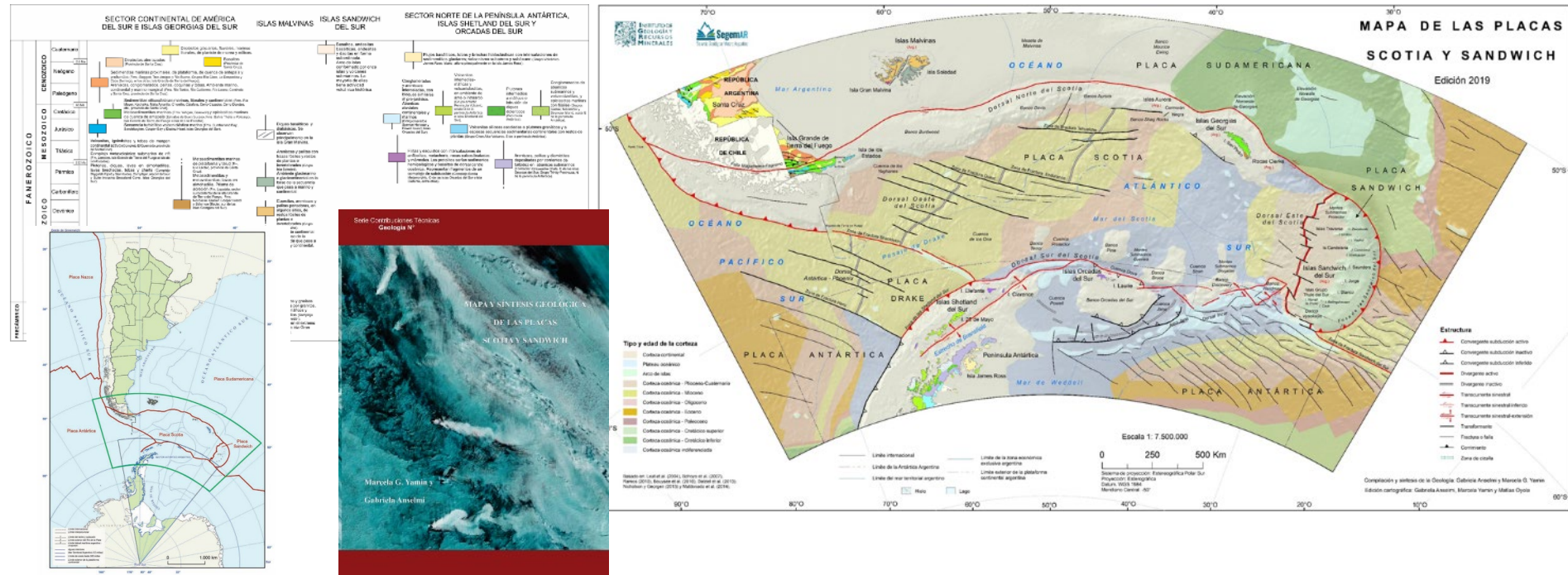


SYNTHESIS PROJECTS: Regional maps

ISLAS MALVINAS



Map and geological synthesis of the Scotia and Sandwich plates (1:750,000)



SYNTHESIS PROJECTS



Updated Geological map
of the Argentine Republic at
1:250.000 scale

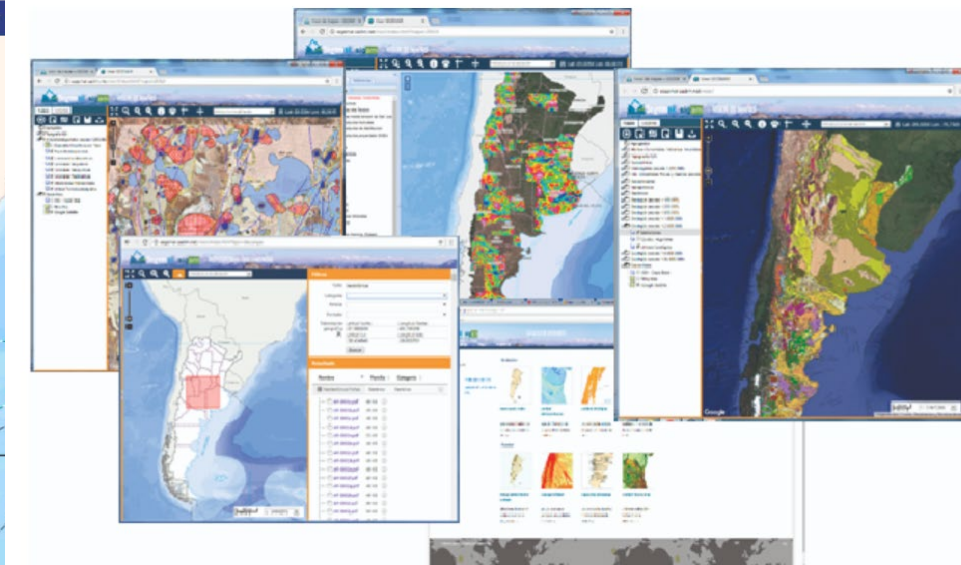
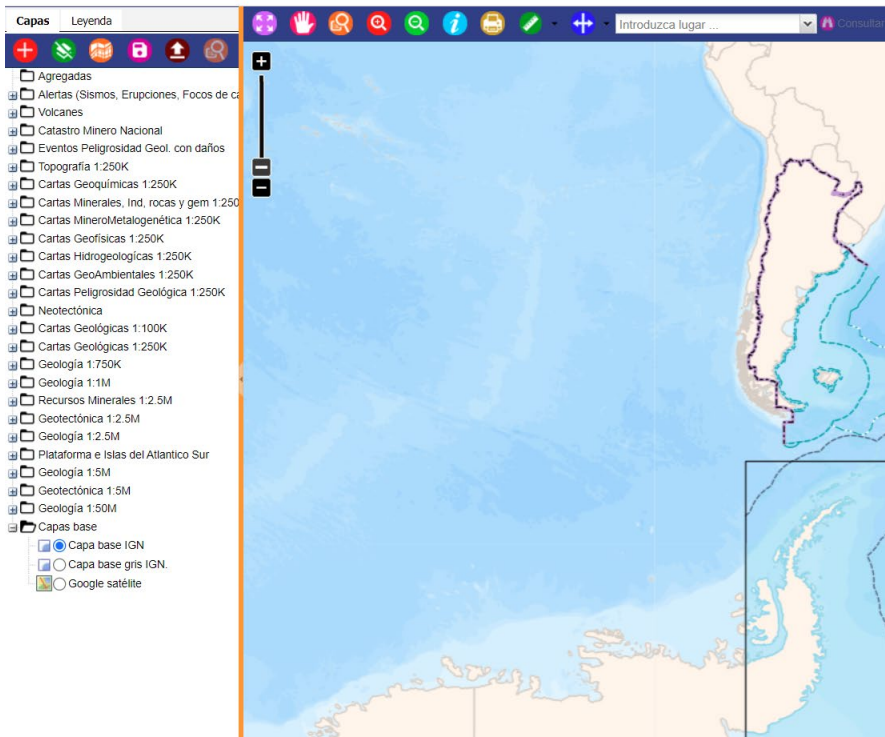


Bicontinental Geological Map
of the Argentine Republic at
1:5.000.000 scale

All the information produced by the Institute is public domain and accessible through three tools that facilitate remote access:

- SIGAM- Mining geoenvironmental information system
- Digital Repository (Digital Library)
- Geological Repository (samples, fossils, minerals, analysis, etc.)

Since 2017, all of the cartography and databases generated at the IGRM are published in the Institute's WEB Portal.



<https://sigam.segemar.gov.ar/visor/>



The geological knowledge of a country is fundamental for the development and progress of its inhabitants.

Thank you very much for your attention!