



Unveiling Brazil's potential for Critical and strategic minerals

Revelando el potencial de Brasil en minerales críticos y estratégicos

Francisco Valdir Silveira

Director of Geology and Mineral Resources

Rafael Pinto Duarte

Assuni



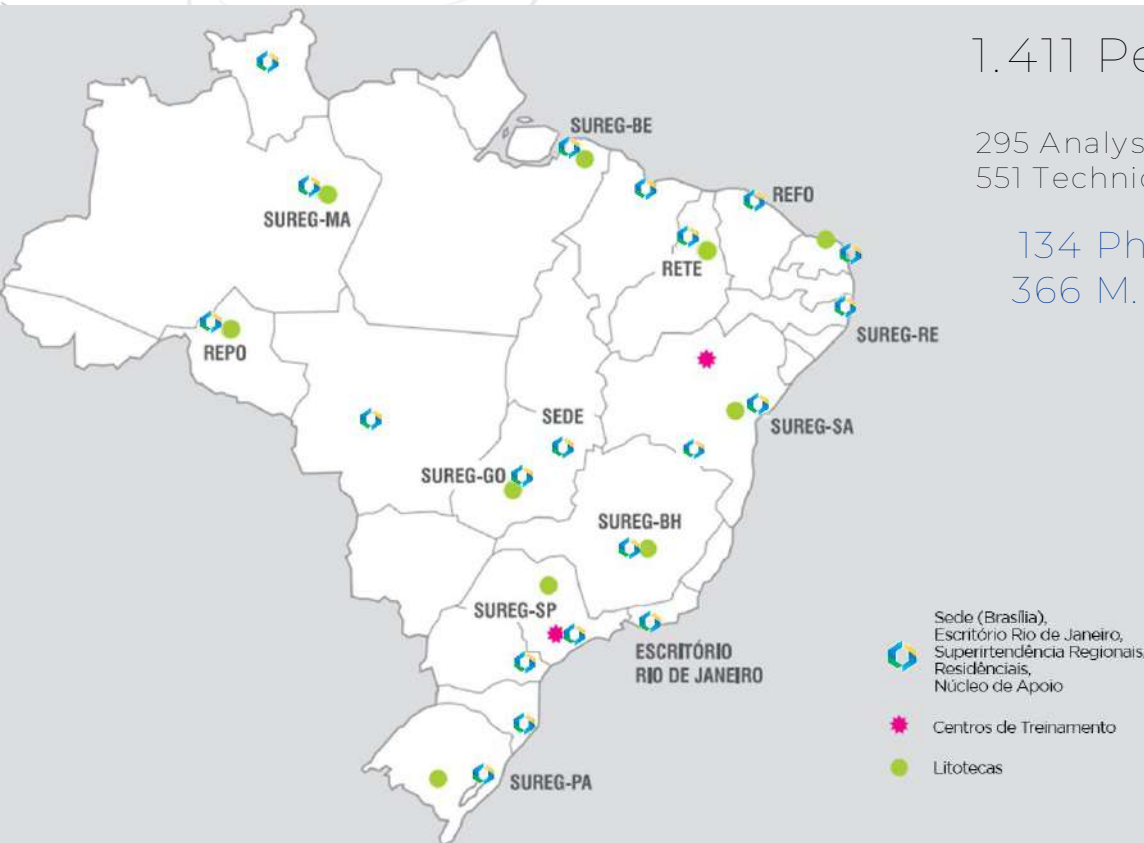


**QUEM
SOMOS**

Somos uma **empresa pública** com atribuições de Serviço Geológico do Brasil.

A nossa **missão** é gerar e disseminar o **conhecimento geocientífico** com excelência, contribuindo para melhoria da **qualidade de vida** e **desenvolvimento sustentável do Brasil**.

UNIDADES REGIONAIS



1.411 Perm. Staff

295 Analysts (GIS; Oceanography)
551 Technicians (Hydro; Field; Lab.)

134 Ph.D. (~23%)
366 M.Sc. (~65%)

SEDE

Brasília

ESCRITÓRIO

Rio de Janeiro

8 SUPERINTENDÊNCIAS

Belém, Belo Horizonte, Goiânia,
Manaus, Porto Alegre, Recife, Salvador
e São Paulo

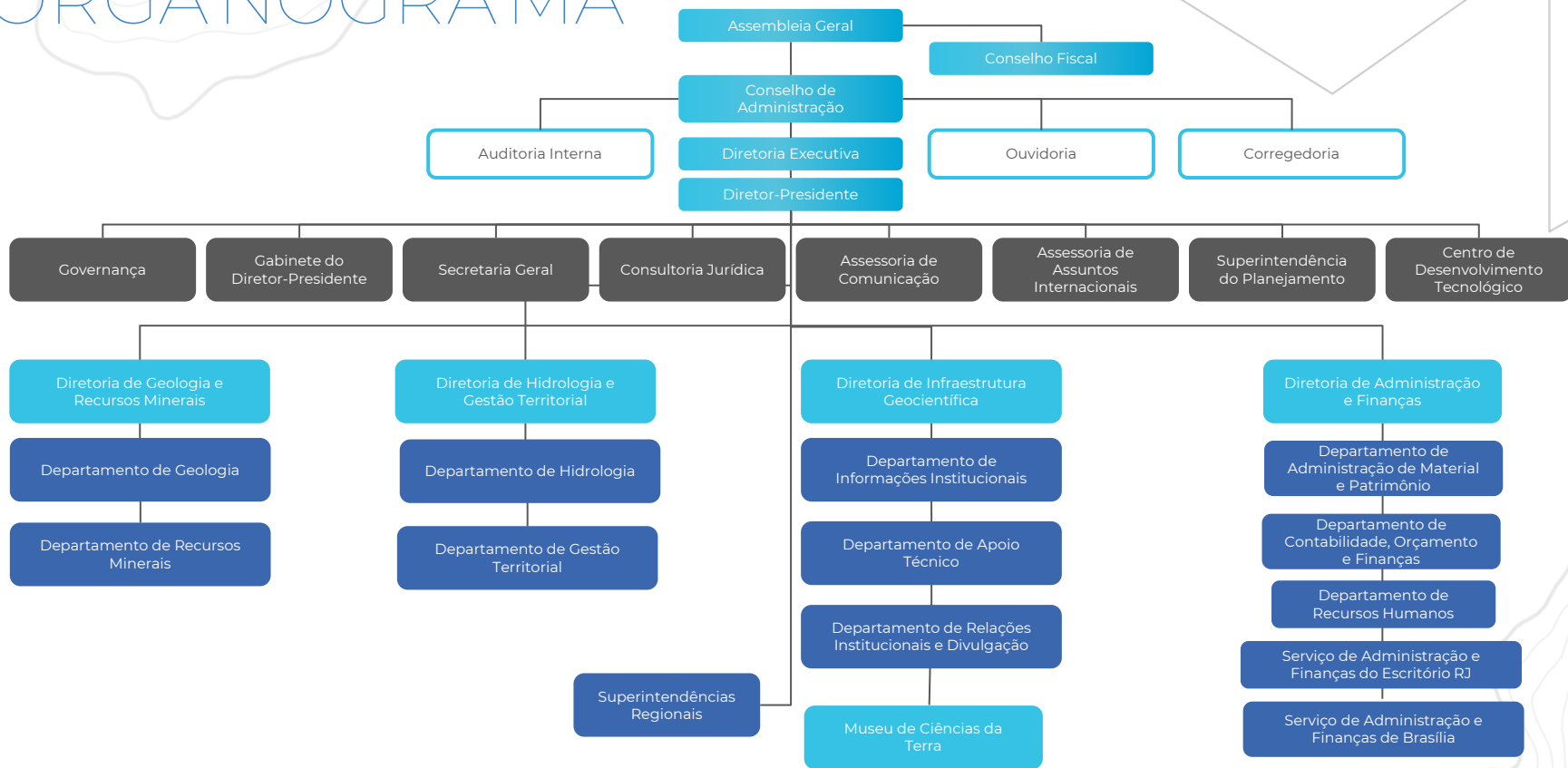
3 RESIDÊNCIAS

Fortaleza, Porto Velho e Teresina

6 NÚCLEOS

Curitiba, Criciúma, Natal,
Roraima, Cuiabá, São Luís e
Palmas.

ORGANOGRAMA



Interesses da DGM

Grupos de especialistas da ASGMI com participação da DGM:

- Geoquímica;
- Sistemas de Informação Geocientífica;
- Cartografia e Geologia Regional;
- Geologia Marinha;
- Metalogenia;
- Patrimônio Geológico.

Ações envolvidas:

- Mapa Metalogenético da América do Sul;
- Publicação do Mapa de Minerais Críticos.

Expectativas durante a Assembleia:

Serão propostas parcerias entre os serviços geológicos membros, com foco na colaboração nas áreas de mapeamento geológico e de minerais críticos para a transição energética. As propostas estão em fase final de redação.

Interesses da DHT

Áreas de especialidade:

- Hidrogeologia;
- Passivos ambientais da mineração;
- Geoquímica;
- Riscos e ameaças geológicas.

Iniciativas em andamento:

- Mapa Hidrogeológico da América do Sul (metodologia de balanço hídrico);
- Contribuição para livro da ASGMI sobre ameaças geológicas;
- Reunião de especialistas em Passivos Ambientais da Mineração em 2023.

Interesses específicos:

- Acordos sobre uso do SIAGAS com Serviços Geológicos Associados;
- Parceria com o Serviço Geológico Mexicano para monitoramento em carste;

Interesses da DIG

Interesse em temas relacionados à popularização das geociências.

Proposta inicial para ASGMI: possibilidade da criação de um novo grupo de trabalho com a temática de mediação geocientífica. A proposta está relacionada ao Programa Institucional do SGB: SGBeduca, que visa a atender demandas de ações nacionais de divulgação e popularização geocientífica e do trabalho do SGB.

Sugestão: incluir o tema Balanço Social na mesa-redonda, a fim de demonstrar o impacto social, ambiental, econômico e de governança das ações da instituição.

Unveiling Brazil's potential for Critical and strategic minerals

Revelando el potencial de Brasil en minerales críticos y estratégicos

Francisco Valdir Silveira

Director of Geology and Mineral Resources



GLOBAL SCENARIO – Critical Minerals

E

The Critical Minerals to China, EU, and U.S. Security

Governments formulate lists of critical minerals according to their industrial requirements and strategic evaluations of supply risks.



EU

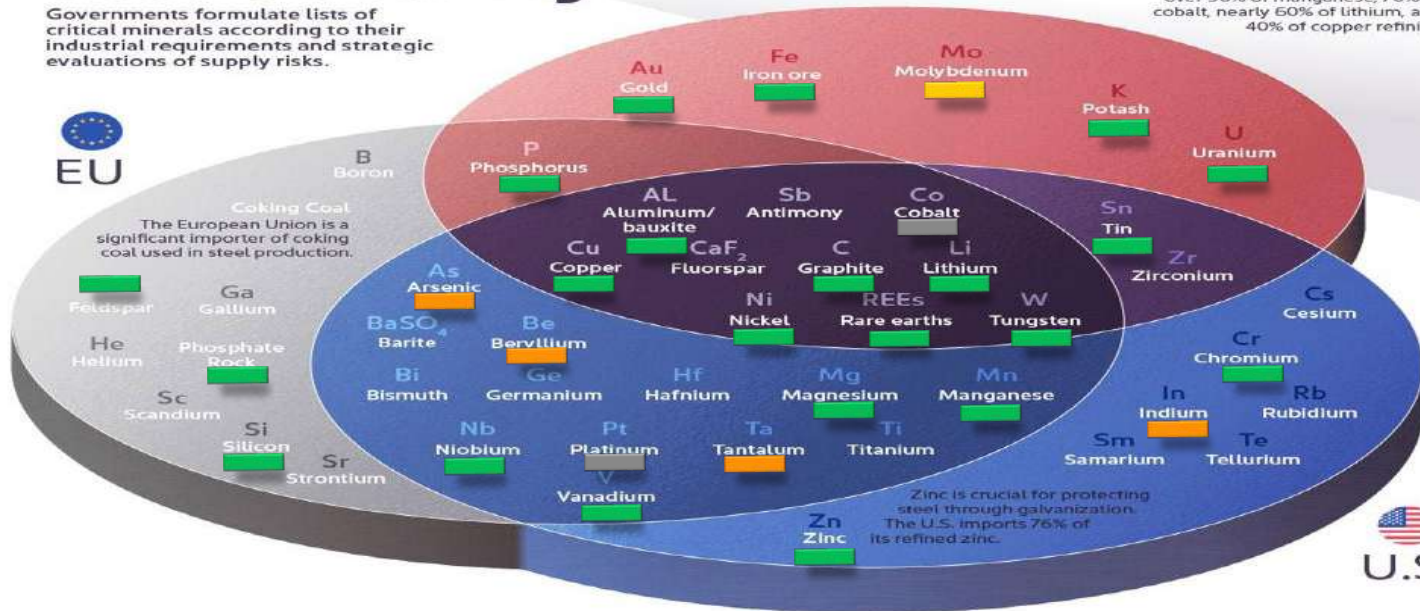
Coking Coal
The European Union is a significant importer of coking coal used in steel production.



China

China leads in mineral processing, controlling 100% of the world's refined supply of natural graphite, over 90% of manganese, 70% of cobalt, nearly 60% of lithium, and 40% of copper refining.

- Producing
- Known resources
- Potential



Source: IRENA, The U.S. Department of Energy















Note: Data as of September 2023

BRAZILIAN SCENARIO





- ✓ **Top 5 Mineral producers** (IBRAM);
- ✓ **Nearly 90 mineral commodities;**
- ✓ **Solid legislation;**
- ✓ **One of the “Cleanest” Electric Matrix in the world** (~83% in 2022; EPE);
- ✓ **Pre-competitive and available geoscientific data**
- ✓ **Skilled workforce;**

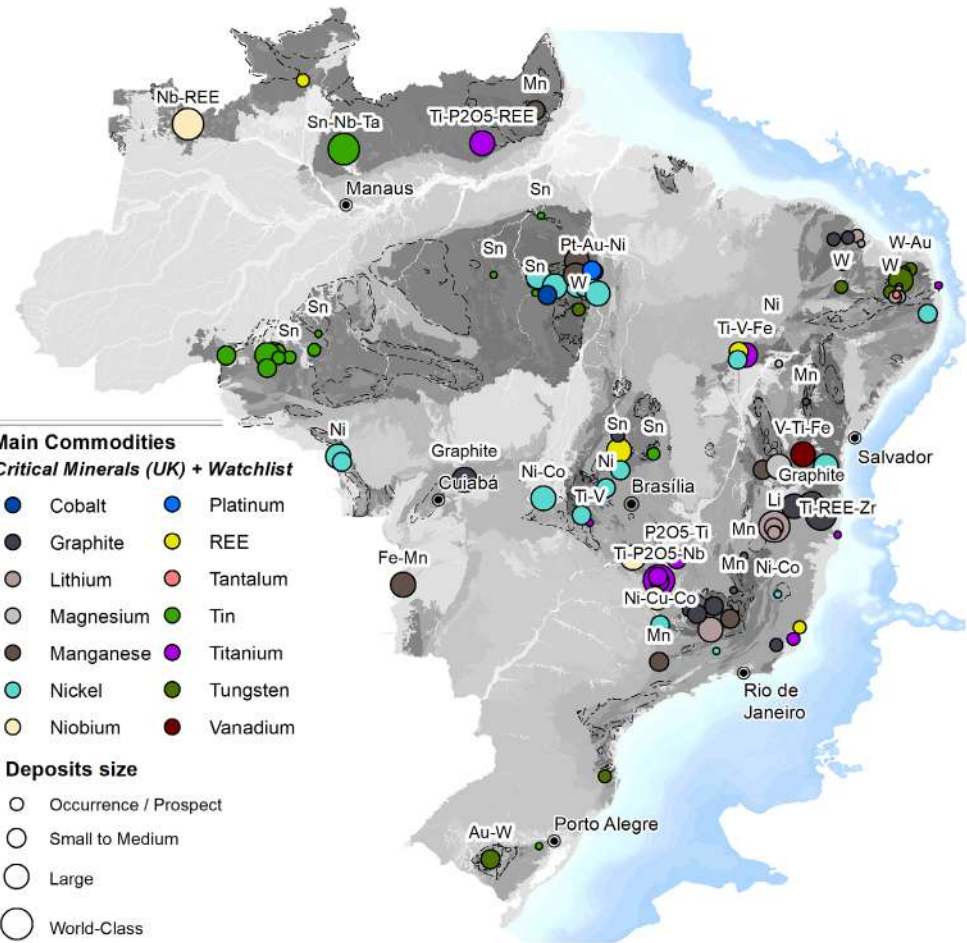
Main Commodities

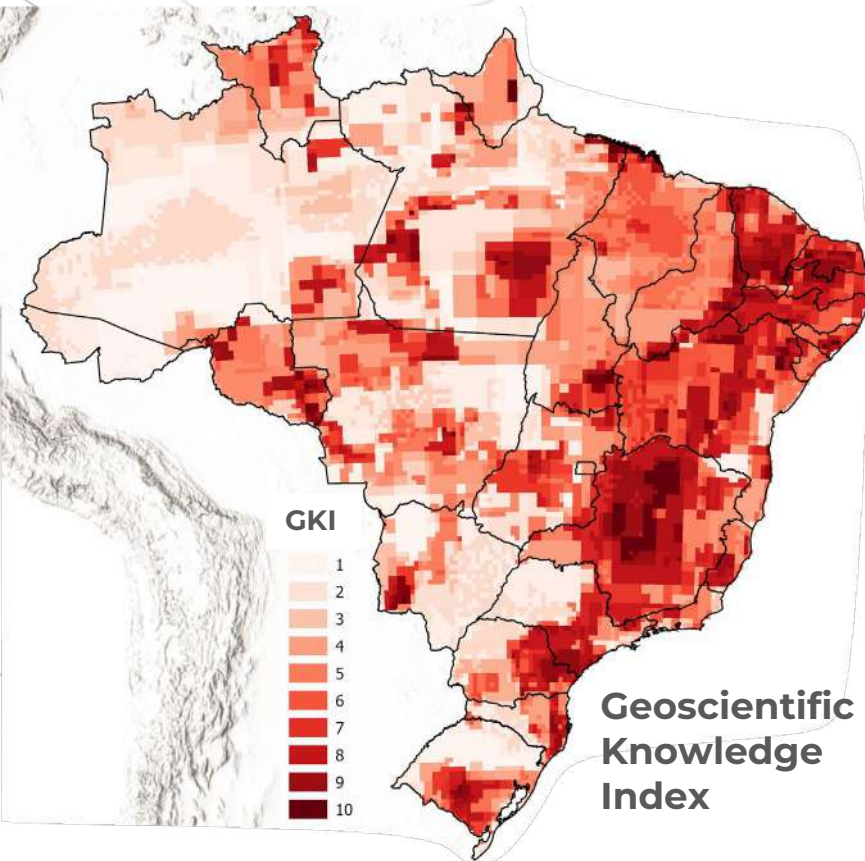
Critical Minerals (UK) + Watchlist

 Cobalt	 Platinum
 Graphite	 REE
 Lithium	 Tantalum
 Magnesium	 Tin
 Manganese	 Titanium
 Nickel	 Tungsten
 Niobium	 Vanadium

Deposits size

 Occurrence / Prospect
 Small to Medium
 Large
 World-Class





Pre-competitive geoscience Data:

- ✓ pre-competitive geoscience information to **grow prospectivity**;
- ✓ reveal **new opportunities**;
- ✓ **reduce exploration risk** and drive industry **investment**.



GEOLOGICAL MAPPING PROGRAM

% Mapping coverage **Brazil**

~ 49%



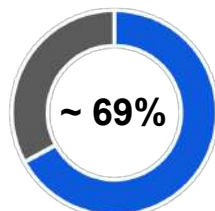
1:250 k

~ 27%



1:100 k

% Mapping coverage **Precambrian shields**



~ 69%

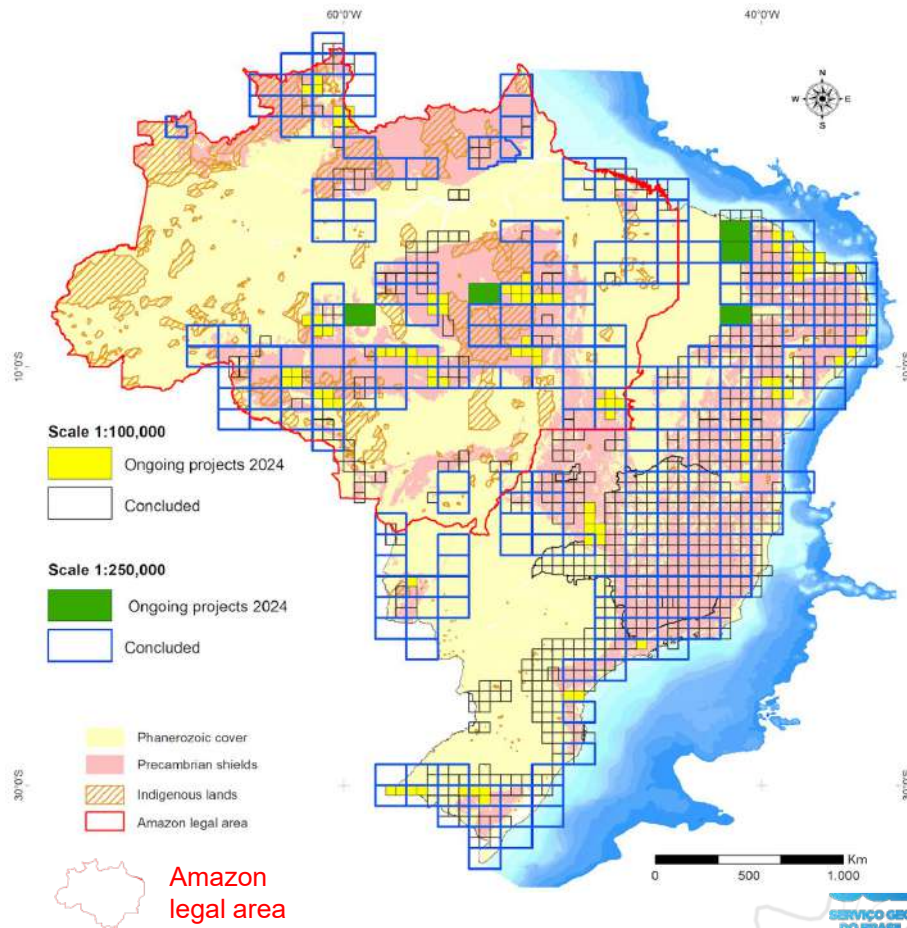
1:250 k



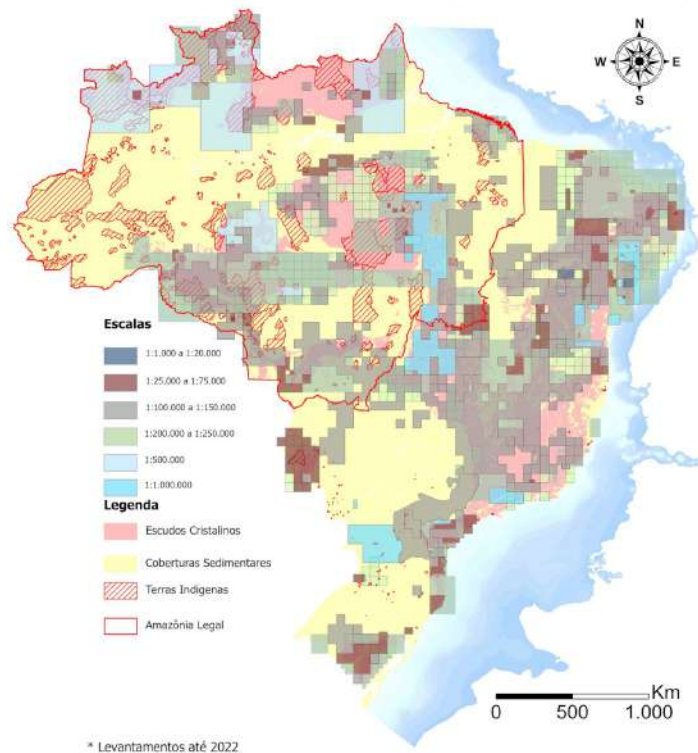
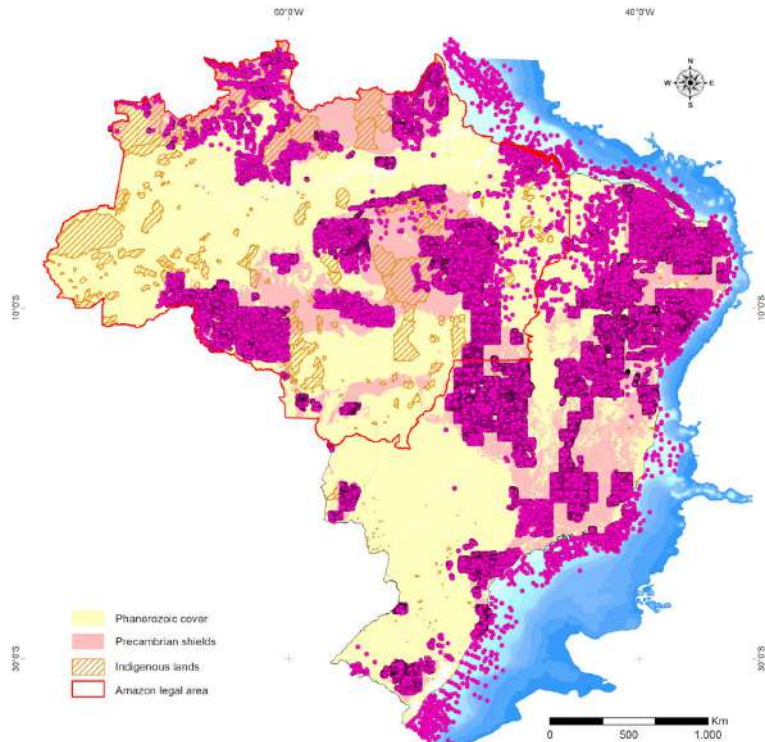
~ 42%

1:100 k

- ✓ Support to mineral exploration, academic studies, water resources research, and land management occupation.
- ✓ Priority for Precambrian Shields and areas of high mineral potential



GEOCHEMICAL SURVEY



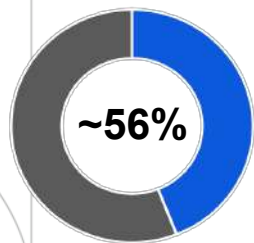
60 % of the Brazilian Territory with coverage at different scales (1:1.000.000, 1:500.000, 1:250.000,00, 1:100.000, etc).

~500,000 geochemical samples available in GeoSGB (<https://geosgb.sgb.gov.br>)

GEOPHYSICAL SURVEY

% Magnetometric and radiometric coverage

Brazil





% Magnetometric and radiometric coverage

Precambrian shields









- ✓ Airborne magnetometric and radiometric surveys conducted between 2003-2016
- ✓ Priority for Precambrian Shields and areas of high mineral potential
- ✓ Support to internal projects (geological mapping and prospective studies), academic studies and attract private investments in mineral research.
- ✓ Open-access database

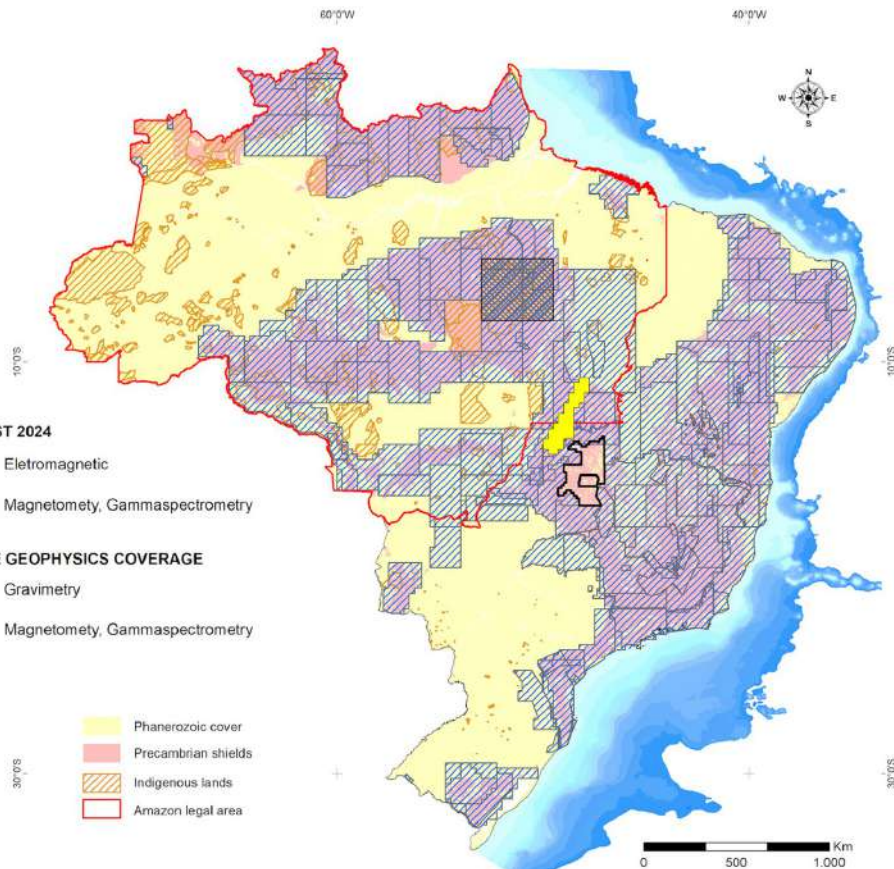
FORECAST 2024

-  Eletromagnetic
-  Magnetometry, Gamaspectrometry

AIRBONE GEOPHYSICS COVERAGE

-  Gravimetry
-  Magnetometry, Gamaspectrometry

-  Phanerozoic cover
-  Precambrian shields
-  Indigenous lands
-  Amazon legal area



*** Flight line spacing: 1,000 – 100 m**

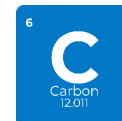
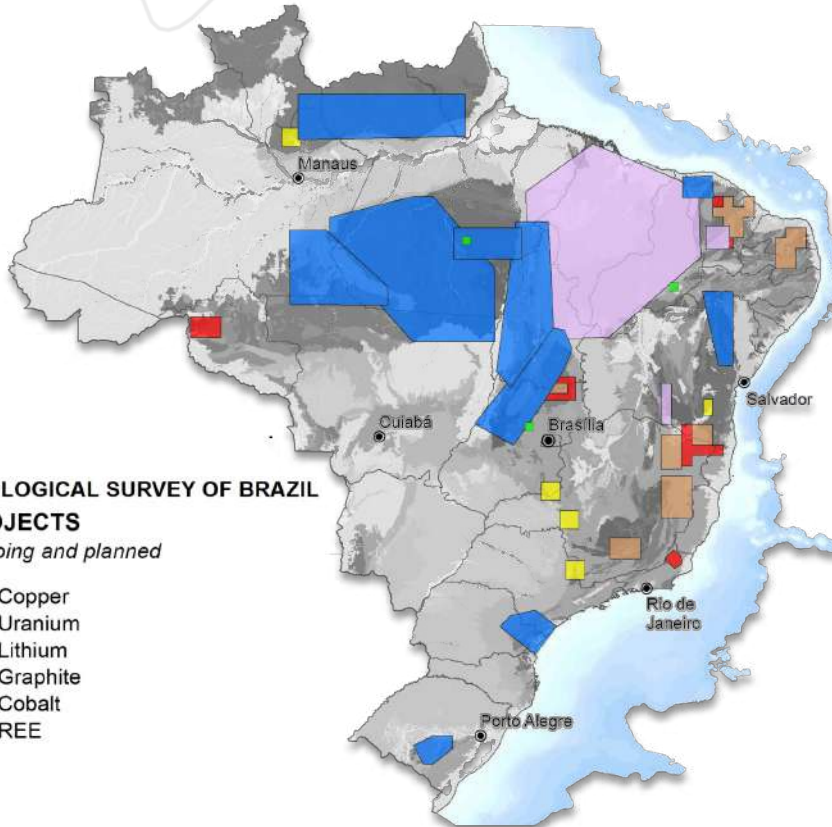
Critical Minerals Projects

Main Activities:

- ✓ Integration of different datasets
- ✓ Revision of metallogenic models
- ✓ Geochemical and Geophysical exploration
- ✓ Multi-scale mineral potential modeling
- ✓ Footprint Identification
- ✓ Estimative of non-discovered resources
- ✓ Evaluation of non-conventional resources

GEOLOGICAL SURVEY OF BRAZIL PROJECTS *Ongoing and planned*

-  Copper
-  Uranium
-  Lithium
-  Graphite
-  Cobalt
-  REE



Projects of Geological Survey of Brazil (GSB)

Charts 1:100.000

REMLAC Program

(Mineral resources of the continental shelf)

✓ PLATAFORMA RASA

PROFOSFORITA:

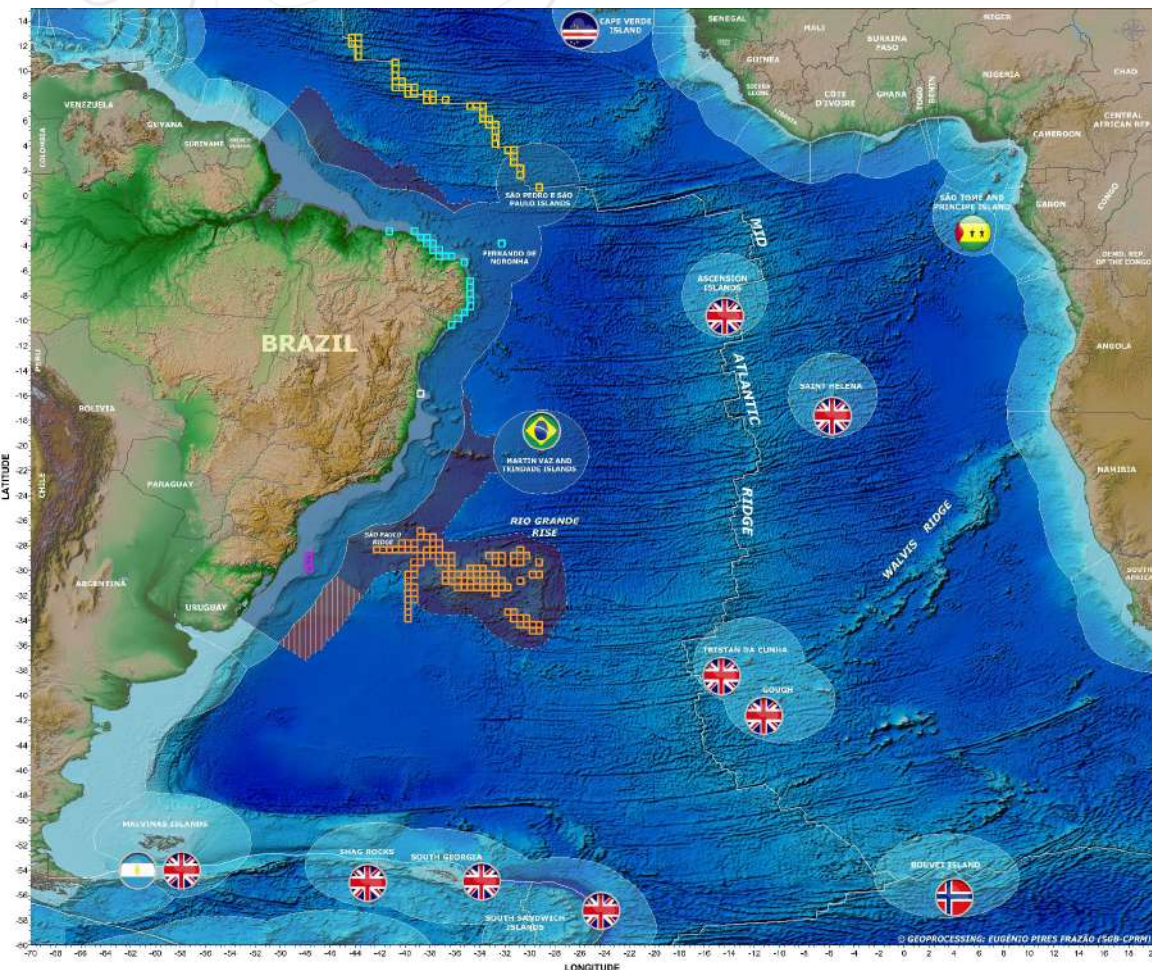
PROJEQUITINHONHA

PROAREA Program

(Deep-Ocean Mineral Deposits)

✓ PROERG:

✓ PROCORDILHEIRA



Diretoria de Hidrologia e Gestão Territorial

Departamento de Gestão Territorial

Áreas de atuação:

Prevenção de Desastres

1. Cursos de Capacitação de Percepção de Risco Geológico
2. Cartografia de Risco Geológico
3. Cartografia de Suscetibilidade a Movimentos de Massa e Inundação
4. Cartografia Geotécnica de Aptidão à Urbanização

Gestão Territorial

1. **Geoquímica Ambiental e Médica**
2. Levantamento da Geodiversidade voltado para o planejamento territorial
3. Locação de Aterros Sanitários para descarte de resíduos sólidos
4. Estudo geoambientais voltados para o fomento do Geoturismo

Passivo Ambientais Mineiros

1. Recuperação Ambiental de Áreas Degradadas pela Mineração de Carvão

Departamento de Hidrologia

Áreas de atuação:

Eventos Críticos (monitoramento e alerta)

1. Sistema de Alerta Hidrológico
2. Mapeamento de Mancha de Inundação
3. Monitoramento de Secas e Estiagem

Monitoramento Hidrológico e Hidrogeológico

1. Operação da Rede Hidrometeorológica Nacional em âmbito nacional
2. Operação da Rede Integrada de Monitoramento de Águas Subterrâneas nos principais sistemas aquíferos do Brasil

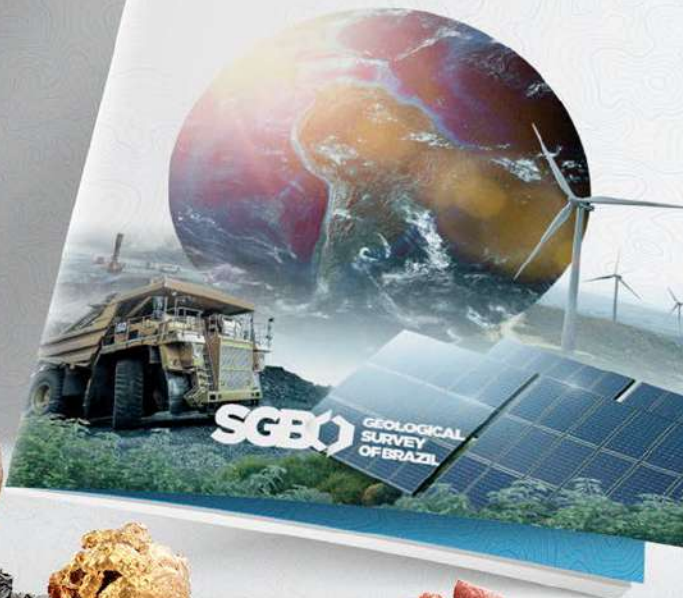
Gestão da Informação Hidrogeológica

1. Sistema de Informações de Águas Subterrâneas - SIAGAS, com o acervo dos poços existentes no Brasil

Estudos Hidrológicos e Hidrogeológicos

1. Cartografia Hidrogeológica
2. Atlas Pluviométricos e Estudos de Chuvas Intensas (Equação IDF)
3. Regionalização de vazões
4. Entre outros projetos aplicados

AN OVERVIEW OF
**CRITICAL AND
STRATEGIC MINERALS
POTENTIAL OF BRAZIL**
2024 EDITION



Discover the Brazilian potential for critical and strategic minerals.

Explore how Brazil's mineral wealth can contribute to a low-carbon economy and food security.

Point the camera or click at the QR code and access our **publication**.



Access our PDAC hotspot: sgb.gov.br/pdac



MINISTRY OF
MINES AND ENERGY



Final Remarks/Observaciones finales

- ❖ **There will not exist a full energy transition without escalating the production of several critical minerals.** This is no longer up for discussion. However, the key question (and opportunity) on the table right now is where to find these resources.
- ✓ **No existirá una transición energética completa sin aumentar la producción de varios minerales críticos.** Esto ya no está en discusión. Sin embargo, la pregunta (y la oportunidad) clave sobre la mesa en este momento es dónde encontrar estos recursos.
- ❖ ***“If you can't grow it, you have to mine it!”*** Brazil has proven potential to be a major player as a relevant supplier of mineral resources for the energy transition. Brazil has at least one large deposit of each of the listed critical minerals, and its geological framework is suitable for increasing production.
- ✓ ***“Si no puedes cultivarlo, tienes que extraerlo!”*** Brasil ha demostrado potencial para ser un actor importante como proveedor relevante de recursos minerales para la transición energética. Brasil tiene al menos un gran depósito de cada uno de los minerales críticos enumerados y su marco geológico es adecuado para aumentar la producción.
- ❖ **In this scenario, the role of the Geological Survey of Brazil is to stimulate mineral activity** by increasing the level of geological knowledge and providing pre-competitive geoscientific information, including new techniques, mineral intelligence reports, scenario analysis, and the synthesis of exploration data.
- ✓ **En este escenario, el papel del Servicio Geológico de Brasil es estimular la actividad minera** aumentando el nivel de conocimiento geológico y proporcionando información geocientífica precompetitiva, incluyendo nuevas técnicas, informes de inteligencia mineral, análisis de escenarios y síntesis de datos de exploración.



Obrigado!